



**CIVIL GEOSPATIAL
SERVICES**

CGS - Civil Geospatial Services

At Civil Geospatial Services, we believe that an innovative approach is key to building the assets and infrastructure Australia needs for a better tomorrow.

We use our collective surveying and geospatial expertise gained across many market sectors to develop solutions that support professionals involved in the planning, design and construction of projects, large and small. Our approach ensures we always deliver reliable information our clients depend on to make informed decisions and realise successful outcomes.

Civil Geospatial Services is committed to raising awareness of surveying and geospatial science and how our profession benefits construction, energy and mining sectors. We know that through greater awareness of what we do will maximise the value every project brings to our economy, our environment and our future.

Our Values



Collaboration and Partnership - CGS works closely with clients to form a partnership that brings mutual benefits. We take the time to listen and understand your requirements fully and actively seek your input in the process. We present each solution clearly and concisely so clients have confidence the job will be done right.



Reliable and Resourceful - CGS prides itself on doing what we say we will do. The professionalism of our team and our ability to work in a methodical and structured way is critical to how we make complex easy. Our field crews have the latest in survey technology at their disposal and a can-do attitude to achieve the desired results.



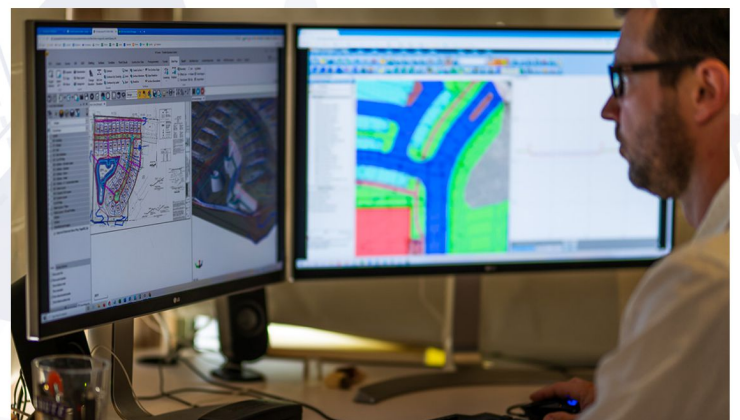
Proactive and Innovative - Our team is always looking to stay a step ahead and to identify potential problems before they become big expensive headaches. Many of our processes are built around the early identification of issues as experience has shown that to be the best way to avoid budget and timeframe blowouts.

Engineering Survey Services

- » Survey Project Management
- » 3D Modelling and Design Analysis
- » Re-design Work On/Off Site
- » Mass Hall Quantities and Progress Reporting
- » Precise Level and Control Networks
- » Detailed Topographic Surveys
- » Bridge Set-out, Pre-pour Checks and Conformance Reporting
- » Drainage Design Calculations for Set-Out
- » Sediment Basin Design and Flow Analysis
- » 3D Modelling and Troubleshooting for Machine Guidance Systems
- » Set-out Surveys - Civil and Structural

Specialist Services

- » UAV/Drone Aerial Surveys - Volumetric Calculations, Cut & Fill Analysis, Flood and Hydrological Analysis, Vegetation Assessment, Asset Inspections (Solar, Gas, Power, Industrial)
- » Terrestrial Laser Scanning - Construction Verification, BIM Ready Point Cloud Models, Feature Extraction and Classification, Deformation Surveys, Architectural, Restoration and Conservation Surveys
- » Trimble GEDO Trolley for Ballast Tamping Rail Alignment
- » Blast Pattern Design & Set-Out
- » 24/7 and Ad Hoc Monitoring Solutions
- » Dilapidation Surveys
- » 3D As Built models and BIM Integration



Recent Major Projects

Carmichael Rail Network

Client: Martinus

Duration: April 2020 to March 2022

Total Project Value: \$340 million

CGS has worked with Martinus to deliver the port-side civil works. Around 86 kilometres of the earthworks formation with 10 multi-span superstructures, 87 culvert structures and three-million cubic meters of cut to fill, as well as rail conformance for the full 210km extent of the track.

Agnew Gas Pipeline (AGP)

Client: McConnell Dowell

Duration: June 2019 to August 2019

Total Project Value: \$50 million

The AGP construction Project had a construction duration of 5 months (December 2018 to April 2019), with commissioning successfully completed shortly after. Survey requirements included pipeline centreline, limits of the construction ROW and any ancillary workspaces surveyed and marked out ahead of ground-disturbing works.

Northern Gas Pipeline (NGP)

Client: McConnell Dowell

Duration: September 2017 to July 2018

Total Project Value: \$800 million

The Northern Gas Pipeline spans 622km, between Tennant Creek in the Northern Territory and Mount Isa in Queensland. Survey requirements included pipeline centreline, limits of the construction ROW and any ancillary workspaces surveyed and marked out ahead of ground-disturbing works.



What our Clients say about us.

Kevin McAlpine - Project Director - Martinus

"I had the pleasure of working with the team Civil Geospatial Services (CGS) for many years and across multiple sectors. In my experience, project success is largely based on the accuracy of the survey set-out and pick-up – particularly the exceptional quality CGS provides every time!

CGS are also at the forefront of ever-advancing technology and have successfully utilised drone flights for material movement reconciliation on the delivery of 85km of civil construction on the Carmichael Rail Network project in central Queensland. I am proud to consider CGS a key partner in the exceptional growth of Martinus now and into the future."

Leon Richards - Technical Director & President of the International Pipe Line Contractors Association (IPLOCA) - McConnell Dowell

"CGS has been supporting numerous McConnell Dowell projects since 2008. The services provided have been professional with reliable and experienced personnel with current Survey Technology always being utilised. This has benefited McConnell Dowell by eliminating costly rework during construction and the ability to provide rapid project close out as survey data quality and accuracy is always ensured."

Vince Garde - Director - Arkad Engineering & Construction

"CGS are experts in their field, and bring to a project the ability to quickly identify and resolve potential issues before they become a problem."



☎ (+61) 07 5641 1000

🌐 www.civilgeospatial.com.au

✉ contact.civilgeospatial.com